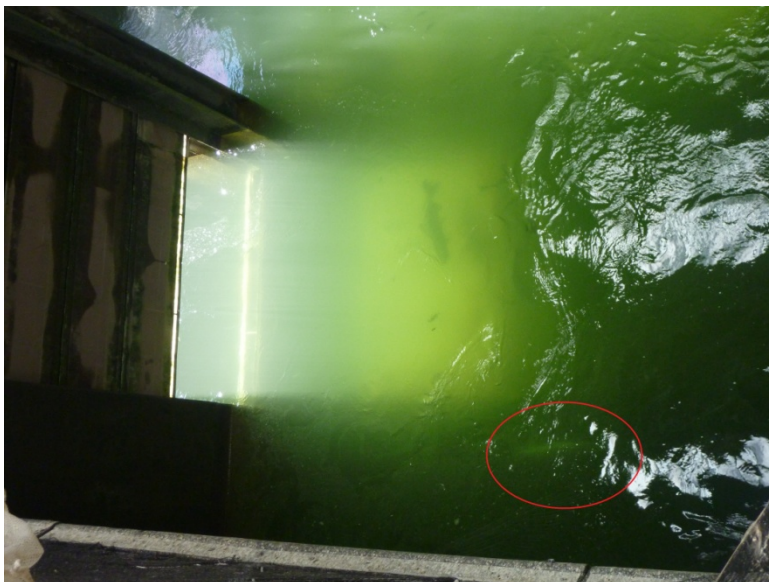
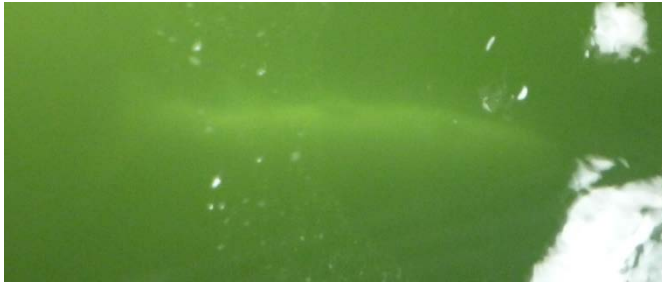


**MEMORANDUM FOR THE RECORD**

**SUBJECT: 14BON78 MFR** – Steelhead mortality at Bonneville’s Adult Fish Facility (AFF).

On 07 October 2014, CRITFC researchers contacted Project Fisheries to report a Steelhead mortality discovered lying at the bottom of the collection pool in the AFF. The researchers attempted to retrieve the fish but due to the location of the fish and the required length of net, they were unsuccessful. Project Fisheries will pursue attempting to recover the fish. Information collected is provided below:

- A. Species – Steelhead (*Oncorhynchus mykiss*)
- B. Origin – Unknown
- C. Length – Unknown
- D. Marks and tags – Unknown
- E. Marks and Injuries found on carcass – Unknown
- F. Cause and Time of Death – Unknown
- G. Future and Preventative Measures – Assessments of AFF improvements to decrease facility mortalities are ongoing



Sincerely,  
Bonneville Fisheries